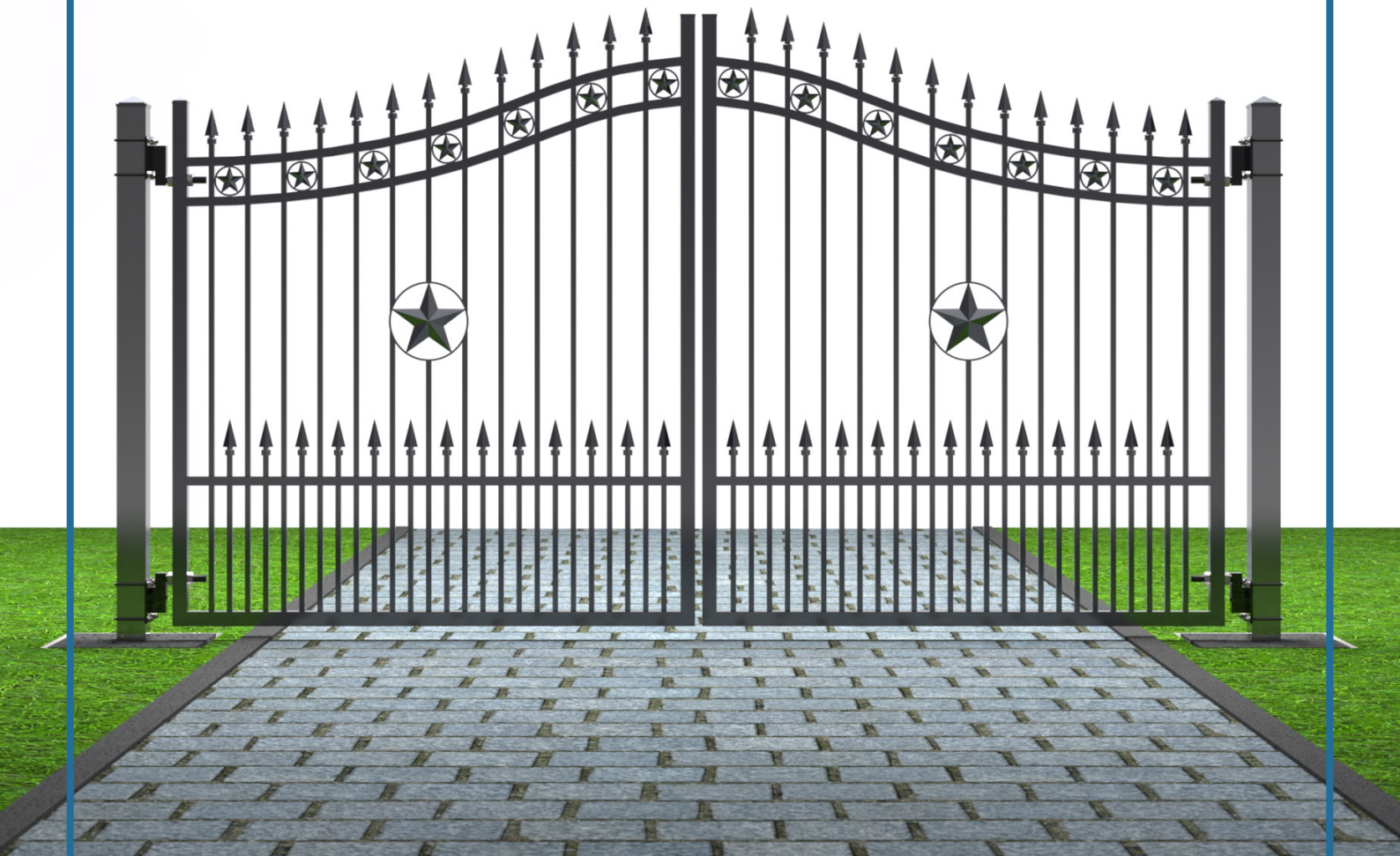




# HOW TO INSTALL Double Swing Gate



# 1. Prepare Accessories



1. Hammer

2. Trowel

3. Spray paint

4. One wheel trolley

5. 3/8" wrench + 7/8" wrench

6. Adjustable wrench

7. Levelling instrument ruler

8. Wood block 2"x4"

9. Floor jack

10. String line level

11. String

12. Straight ruler

13. Shovel



## 2. Setting Your Terminal Posts

Although post depth and hole diameter will be determined by local weather and soil conditions, holes for terminal posts and line posts are typically dug about 18" - 20" in diameter and 36" deep with sloped sides.

### Step 1

Dig all terminal post holes with a shovel (figure 2.1).



FIGURE 2.1

### Step 2

Put posts down on the left hole and on the right. The post should be centered in the hole and the distance between two posts is

- \* 151 inch with gate 12 ft
  - \* 176 inch with gate 14 ft
  - \* 199 inch with gate 16 ft
- (figure 2.2).



FIGURE 2.2

### Step 3

Check perpendicularity and parallelism by using string and the leveling instrument ruler. Make sure the post is straight (figure 2.3).

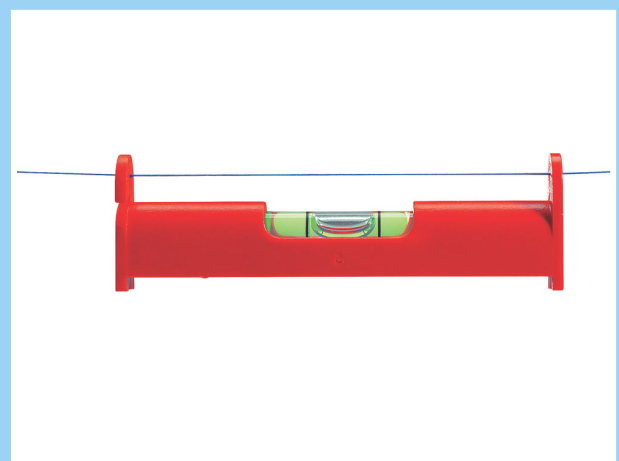


FIGURE 2.3

### Step 4

Pour concrete around the post (about 16 bags of 80 lbs cement, 4000 psi), fill to ground level. Keep the concrete cures for 48 hours (figure 2.4).

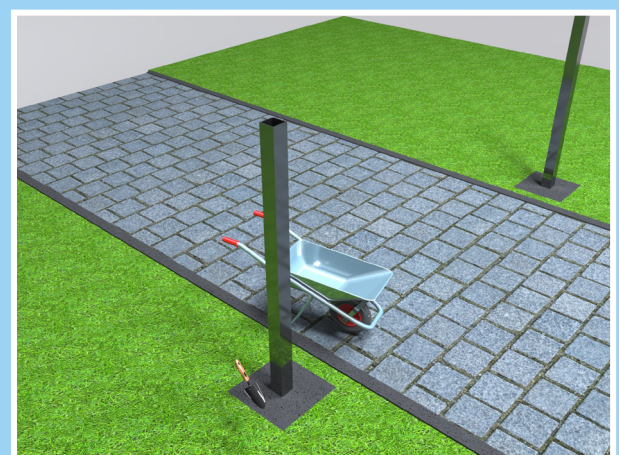


FIGURE 2.4

### 3. Hanging your hinges

#### Step 1

Prepare SGMK101 Kits-4 of 1/2 in U bracket, nuts, washers, adjustable hinges and plates (Support up to 1000lbs gates) (figure 3.1).

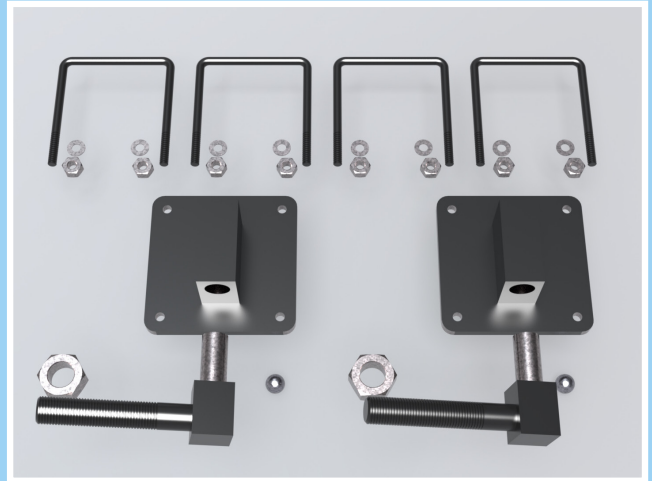


FIGURE 3.1

#### Step 2

Install the welded hinge-plate onto 1/2 in Ubracket at upper post (figure 3.2)

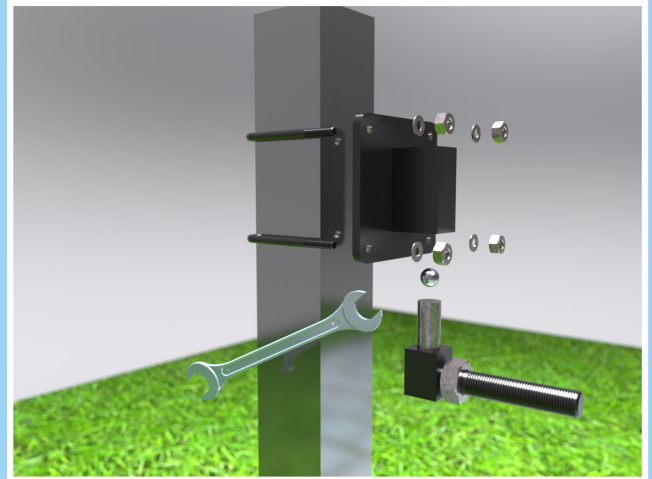


FIGURE 3.2

#### Step 3

Tighten the nut with sufficient force. And continue for both hinges (figure 3.3).

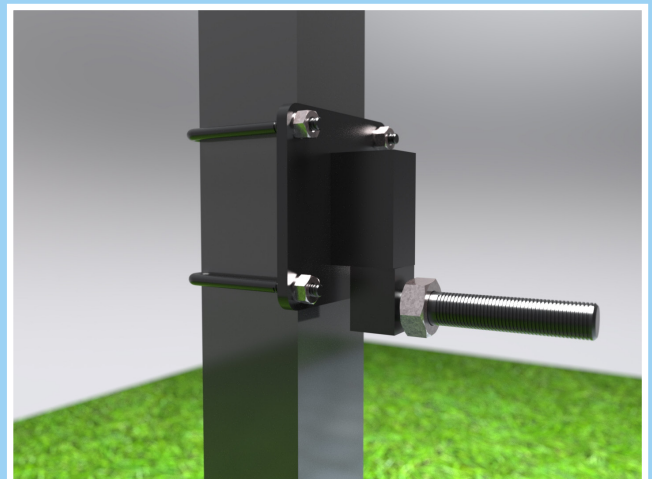


FIGURE 3.3

## 4. Hanging your gates

### Step 1

Align the Swing gate with post, place 2"x4" wood block in the bottom of swing gate as shown (figure 4.1).



FIGURE 4.1

### Step 2

Slide 7/8" diameter alloy threaded rod into gate and hinges. Use the floor jack to align gate and hinge so you can secure the thread rod into the bottom hinge. And do the same to the upper hinge. (figure 4.2)



FIGURE 4.2

### Step 3

Align gate make sure it is level with the hinges (figure 4.3).



FIGURE 4.3



## 5. Adjusting your gates

### Step 1

Secure the gate with 7/8 nut. Loosening up upper hinge-plate to snug fit upper hinge and gate. Secure hinge plate after making the upper hinge adjustment. Secure upper hinge onto gate as shown. Measure distance between hinge and post, make sure it is 3.5" gap (figure 5.1).

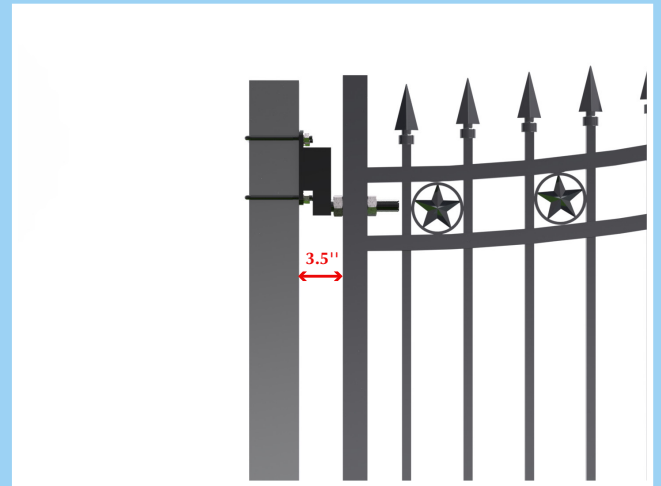


FIGURE 5.1

### Step 2

Make sure distant from ground level to bottom gate, it is 2" gap (figure 5.2).

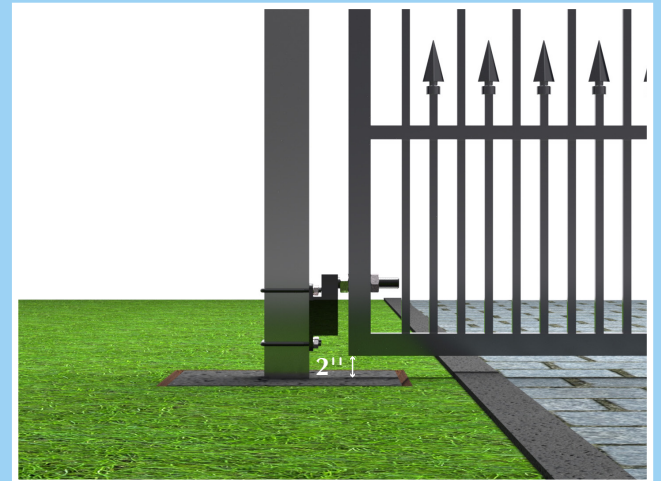


FIGURE 5.2

### Step 3

Place levelling instrument ruler on to gate. Adjust bottom hinge and top hinge to make it level (figure 5.3).

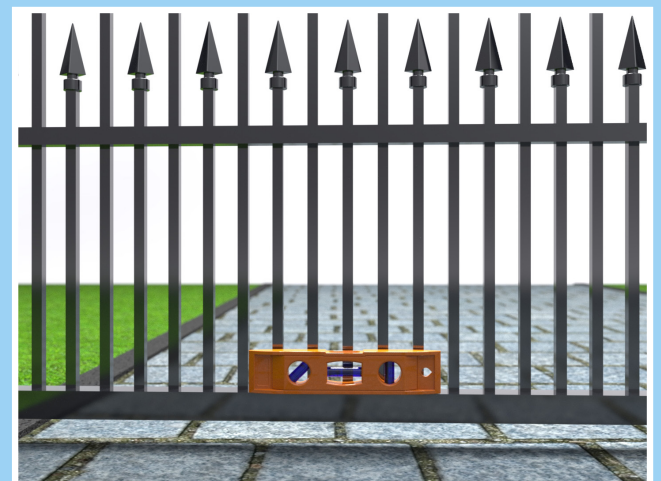


FIGURE 5.3

## 5. Adjusting your gates

### Step 4

Remove the 2"x4" wood block. Manually open and close gate, make sure Swing gate in and out smoothly and the gate does not touch the any part of the U-bracket when it is open all the way (figure 5.4).



FIGURE 5.4

### Step 5

Make the same installation process for the right gate for completed installation of dual Swing gates. And make sure the gap between two gate is 1" (figure 5.5).



FIGURE 5.5

### Step 6

After completing installation of dual Swing gates, weld a 3" x 6" plate on the frame of the right gate to limit the left gate opening angle when we close them (figure 5.6)

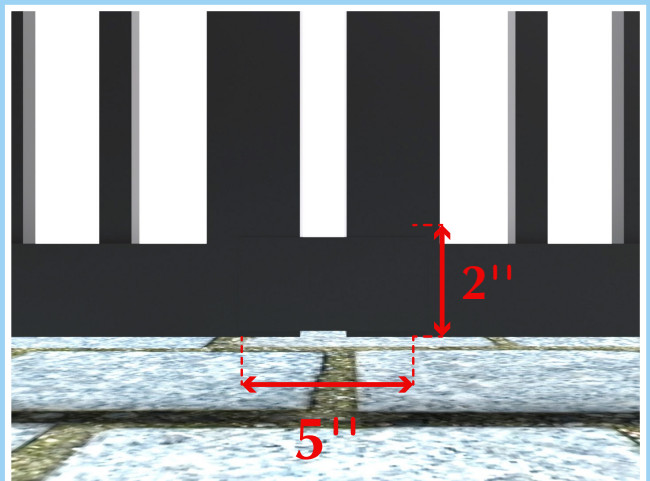


FIGURE 5.6

## 6. Complete, Touch-Up and Clean-Up Of Installation

### Step 1

After installing two posts and hanging double swing gate, have to cut down the two posts if they are taller the frame of gate. Make sure distant from ground level to the top of two posts is same level with the frame of gate. Install covers on posts and door frames, using hammer to do it (Figure 6.1).



FIGURE 6.1

### Step 2

Clean material as necessary with a soft rag and mild soap to remove dirt and any concrete that may have splashed onto the gate. Rinse with clean water to remove all soap. Check and paint all areas damaged during handling and installation to resist of rust. (Note: Periodically check gate for signs of wear and oxidation and repaint as necessary) (Figure 6.2).



FIGURE 6.2

### Step 3

Complete and hand over swing gates for customer (Figure 6.3).



FIGURE 6.3